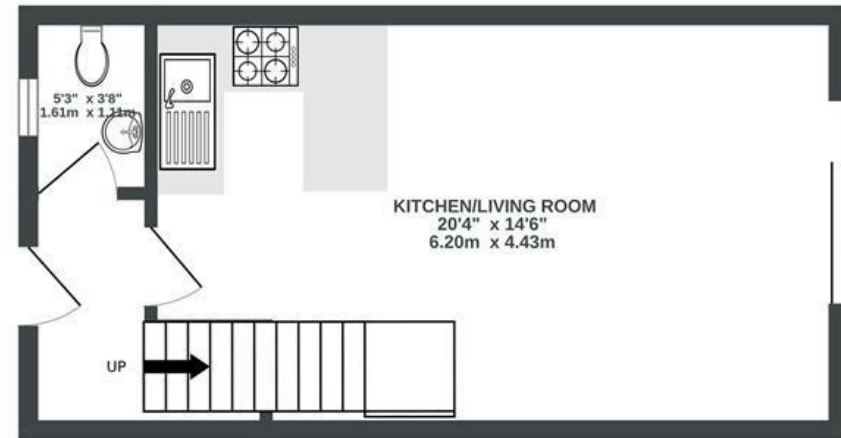


Catherine Mead Mews BEDMINSTER

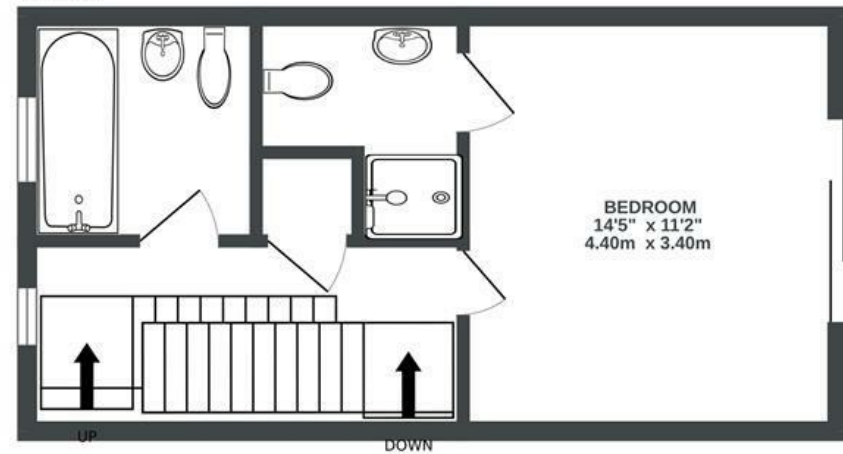
APPROXIMATE FLOOR AREA
81.1 SQM / 873 SQFT



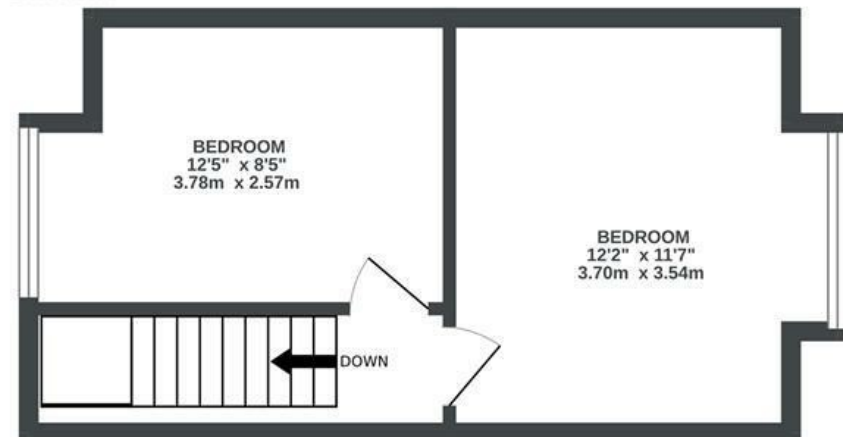
GROUND FLOOR



FIRST FLOOR



SECOND FLOOR



Boardwalk

Catherine Mead

, BRISTOL

£

£400,000



BS3 1FX

zzz

3 Bedrooms



3 Bathrooms

"One of the best things about the house is its south-facing aspect, which fills the home with sunlight. Outside is an ideal space for gardening, a studio, or simply relaxing and socialising. We're just a short walk from beautiful parks and the city farm, offering plenty of ways to enjoy nature close to home. With East Street and North Street on the doorstep and the Harbourside just across the river, the location really couldn't be better."

